



Old Rye

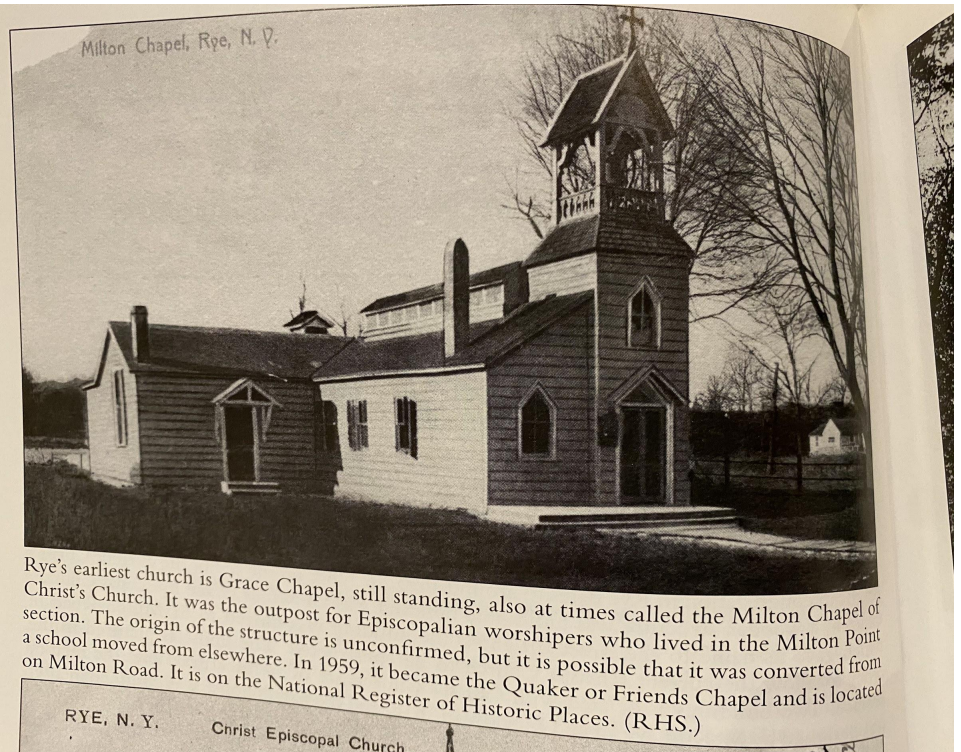


For Studies in Community and Local History

Image Sources:

Rheingold, Paul D. Rye: Postcard History Series. Acadia Publishing: 2009.

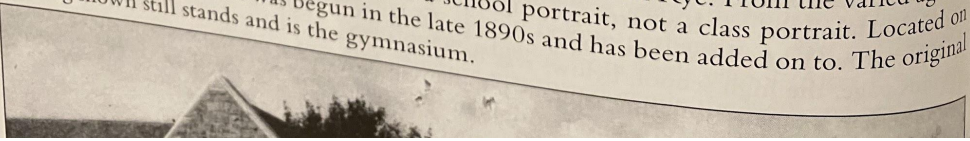
Others from Rye Historical Society Archives



Do you recognize either of these places from near Milton School?

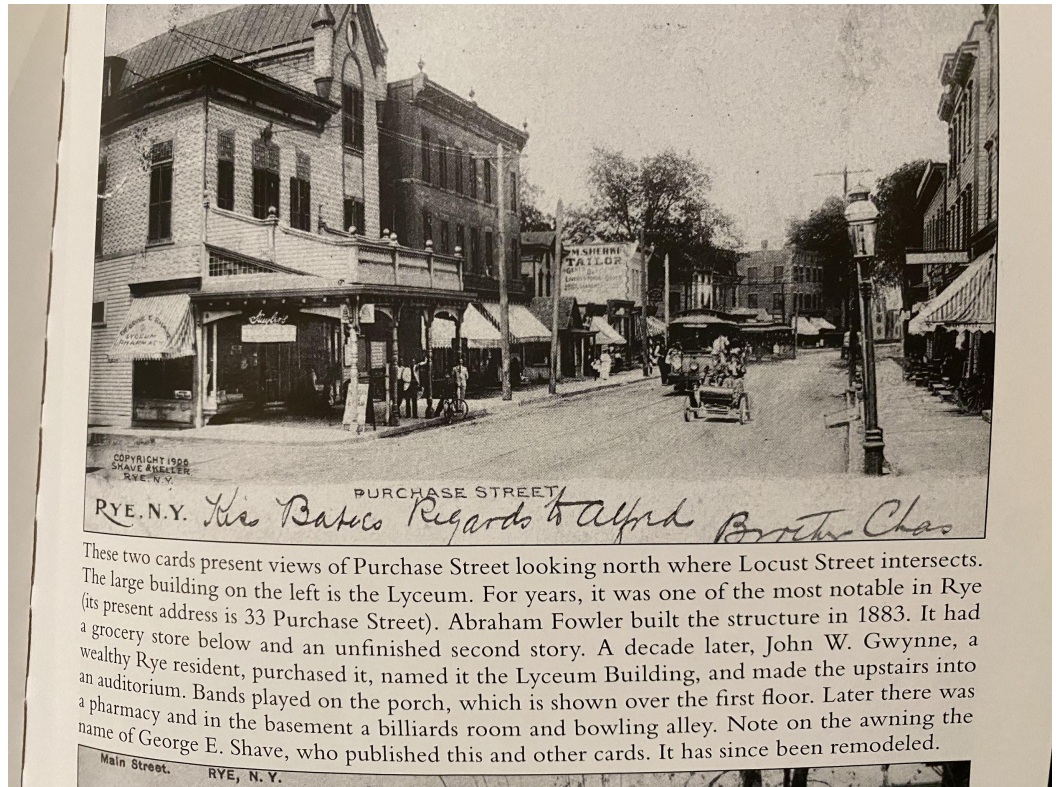
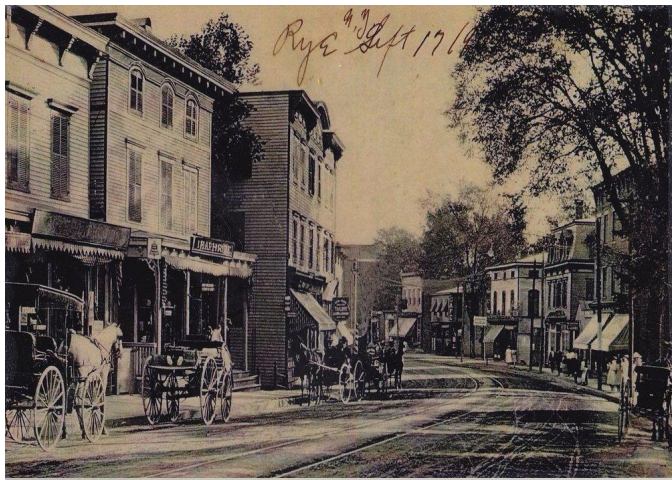


Milton School was the public school for the Milton Point area of Rye. From the varied ages of the students in the picture, it appears this is a school portrait, not a class portrait. Located on Hewlett Avenue, the school was begun in the late 1890s and has been added on to. The original building shown still stands and is the gymnasium.

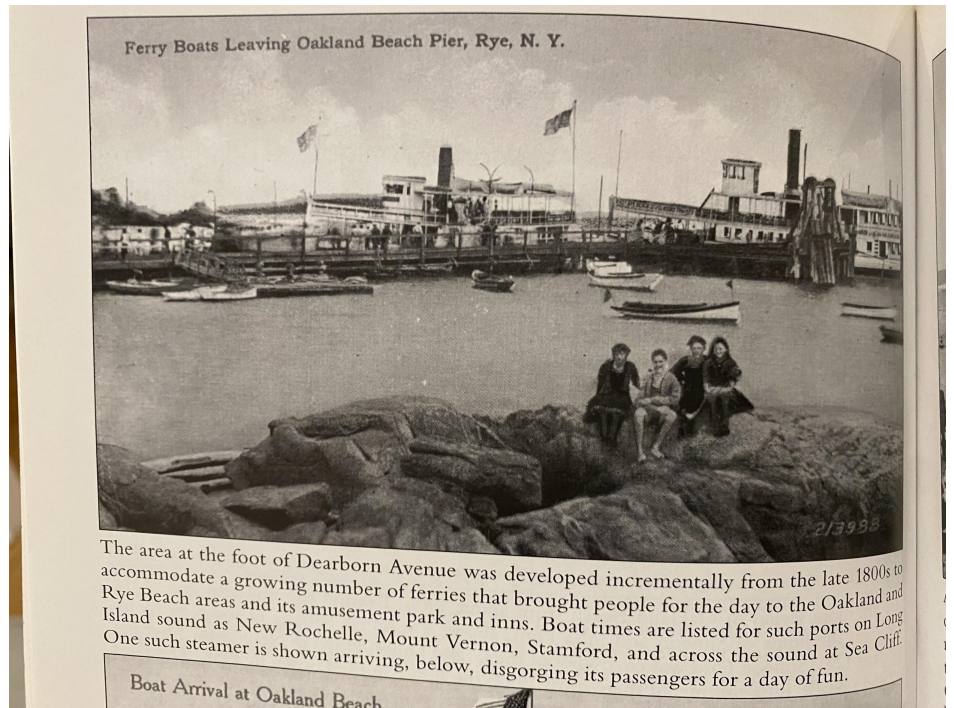


Ver
Sen
mid
The
ofte
G

What about this place?



These two cards present views of Purchase Street looking north where Locust Street intersects. The large building on the left is the Lyceum. For years, it was one of the most notable in Rye (its present address is 33 Purchase Street). Abraham Fowler built the structure in 1883. It had a grocery store below and an unfinished second story. A decade later, John W. Gwynne, a wealthy Rye resident, purchased it, named it the Lyceum Building, and made the upstairs into an auditorium. Bands played on the porch, which is shown over the first floor. Later there was a pharmacy and in the basement a billiards room and bowling alley. Note on the awning the name of George E. Shave, who published this and other cards. It has since been remodeled.



These are scenes at the beach in Rye



THE AIRPLANE COASTER (FROM PLAYLAND AUTO PARK)
PLAYLAND W. C. P. C.
The predominant means of coming to Playland since its opening is by automobile. A large parking lot was created partially from dredging and filling, a portion of which is shown here. Its location shows on the aerial views. How owners found their cars from all the similar-looking vehicles is a question that comes to mind. In the background are the two roller coasters then in the park.



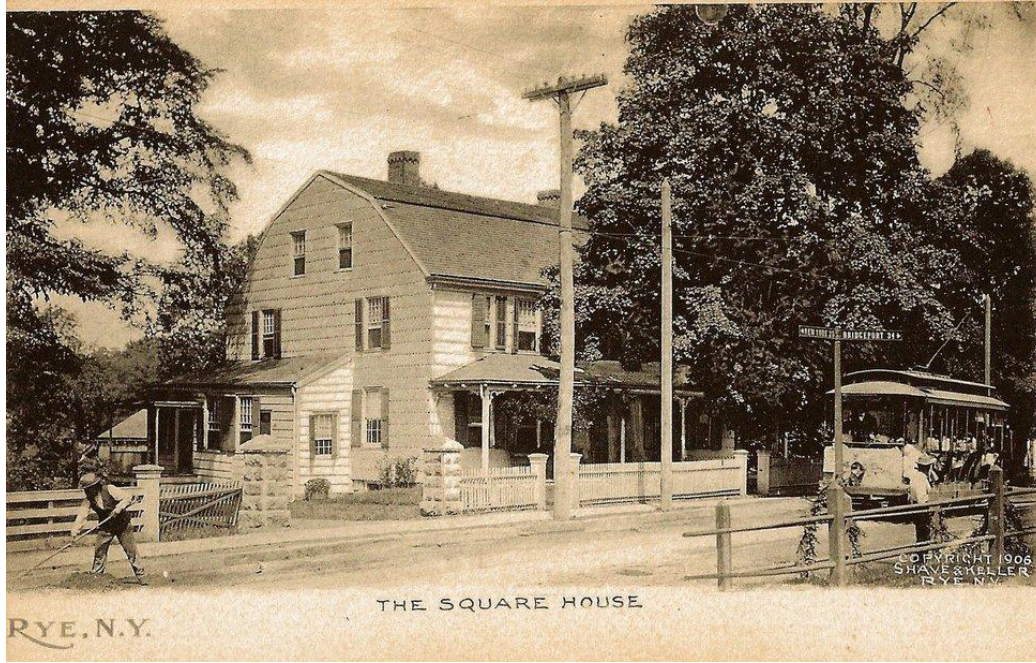
EXCURSION BOATS AT THE DOCK — PLAYLAND, Westchester Co. Park System, RYE, N. Y.
Another way to come to the park was via boat. Before small ferries came to the shorefront of Rye landing at Dearborn Avenue, but now people came by much larger boats, almost liners in service to Playland from New York City and Jersey City. Round trip was \$1.75 for adults and 70¢ for children.



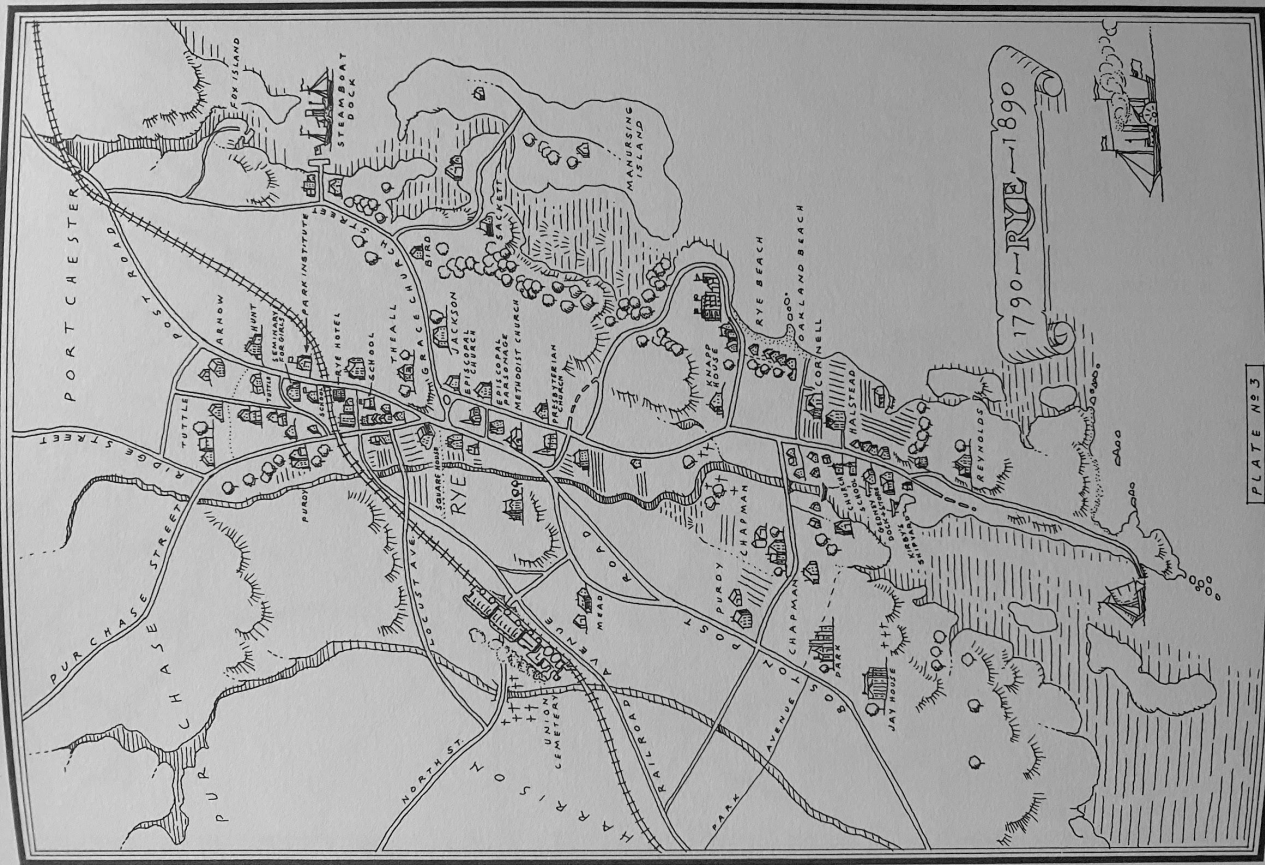
Where do you think this is?



The Boston Post Road in 1890



The Square House and the Knapp House circa 1900



Map of Rye, 1790-1890

Source:
Hawkins, Arlene D. Read
About Rye, 1660-1960.
Rye Historical Society:
1985.

Map by Lee Albertson